

137

Percussion of version for classical orchestra

Chocolats symphoniques

(Symphonic Chocolates)

Maxime Goulet
www.maximegoulet.com
Revised March 6th, 2020

I - Chocolat au caramel

Une longue mélodie lyrique supportée par une sonorité riche et enveloppante.
(I - Caramel Chocolate: A long lyrical melody supported by a rich and enveloping sonority.)

♩ = 60

2

Suspended cymbal

pp \rightarrow f

A

6-9

4

Suspended cymbal

pp \rightarrow f

B

13-19

7

Suspended cymbal

pp \rightarrow f

♩ = ♩ .

C

23

Glockenspiel

p

2

D

29-36

8

♩ . = ♩

E

38-41

4

Suspended cymbal

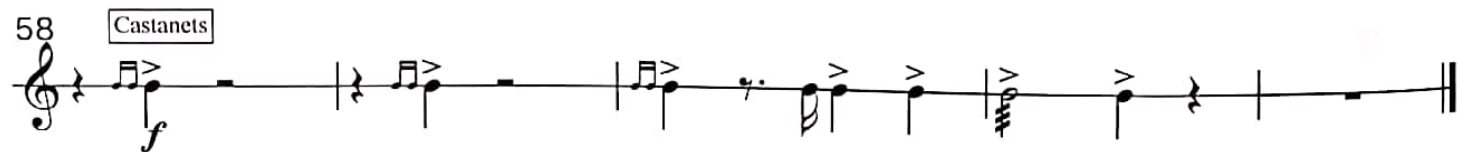
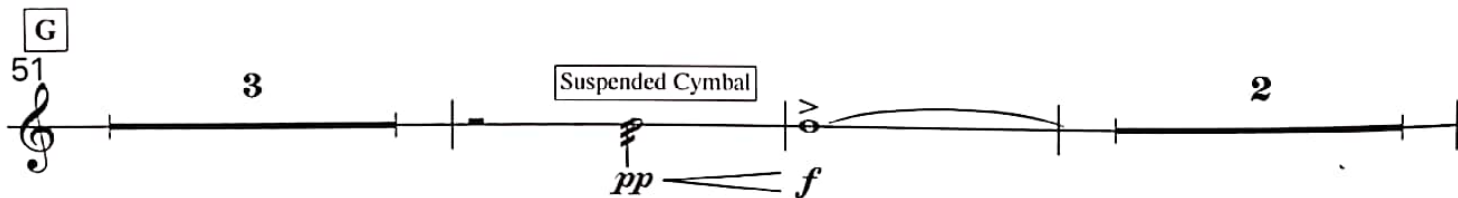
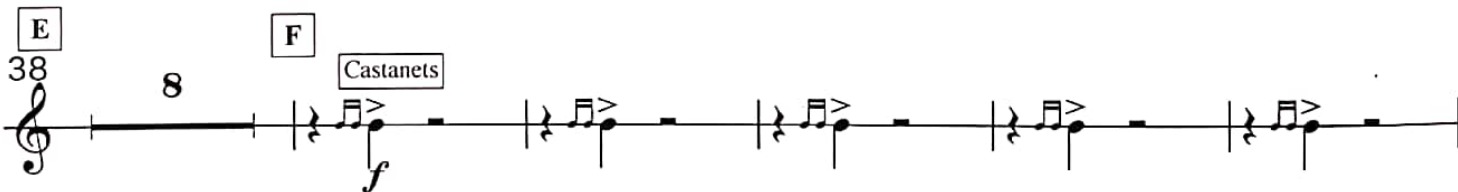
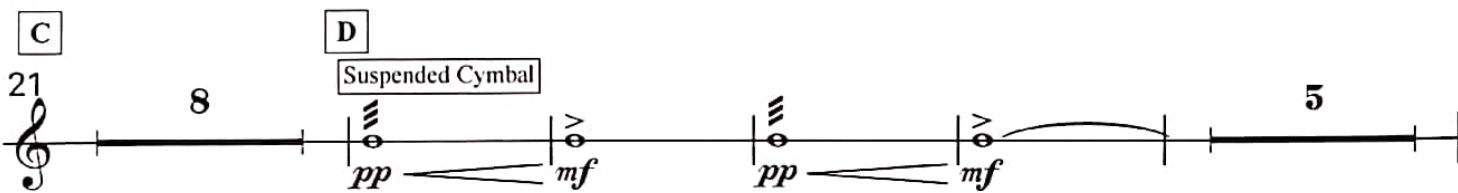
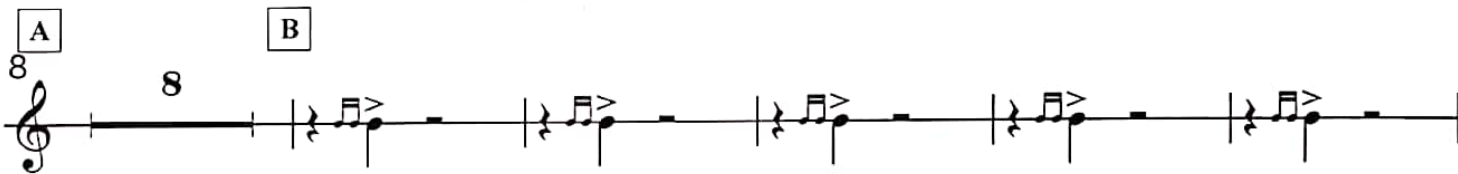
pp \rightarrow f

II - Chocolat noir

Une intense habanera du désir et de la séduction, relevée d'une amertume dissonante.
(II - Dark Chocolate: An intense habanera of desire and seduction, spiced up with a dissonant bitterness.)

♩ = 90

Castanets



III - Chocolat à la menthe

Une délicate fraîcheur aux sonorités glacées.
(III - Mint Chocolate: A delicate freshness with icy cold sonorities.)

$\text{♩} = 65$

Glockenspiel

Imitate an unpitched ascending wind sound with your voice.

pp *pp* *f* *pp*

4 4 Glockenspiel 2

p

A 11

Suspended cymbal

Glockenspiel

pp *mp* *p*

B 18

Suspended cymbal

Glockenspiel

Suspended cymbal

pp *mp* *p* *pp*

C 26

Imitate an unpitched ascending wind sound with your voice.

pp *f* *pp*

IV - Chocolat au Café

Un tempo d'espresso à saveur brésilienne.

(IV - Coffee-infused Chocolate: *An espresso tempo with a Brazilian flavour.*)

♩ = 96

(The first measure is a pickup measure for the flute-I: three 16th notes)

2/4

4

5 Egg shaker

mp

A

9

3 Cowbell 3

mp *f*

B

17

4 Egg shaker

mp

C

25

4 Claves

mf

35

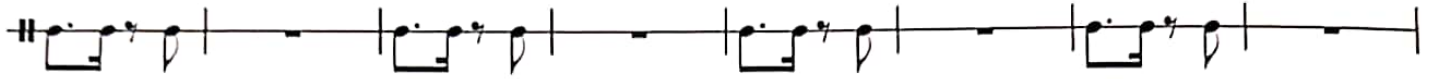
3

4 - 1

IV - Chocolat au café (version for classical orchestra)

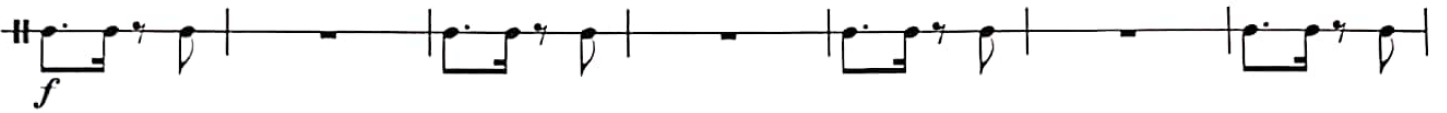
D

41

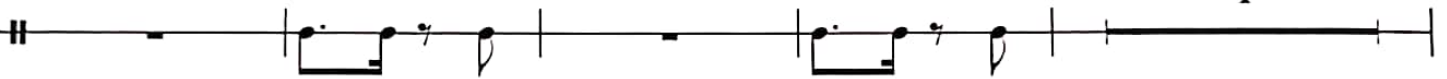


E

49



56



F

64

Egg shaker

4

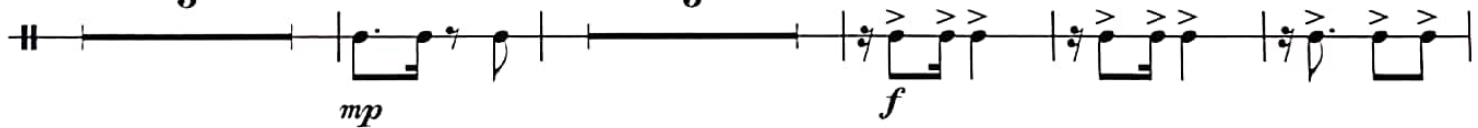


G

72

Cowbell

3



H

82

Egg shaker

4



92

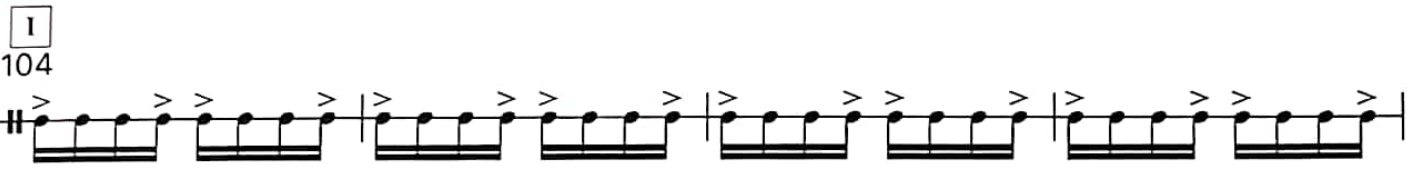


IV - Chocolat au café (version for classical orchestra)

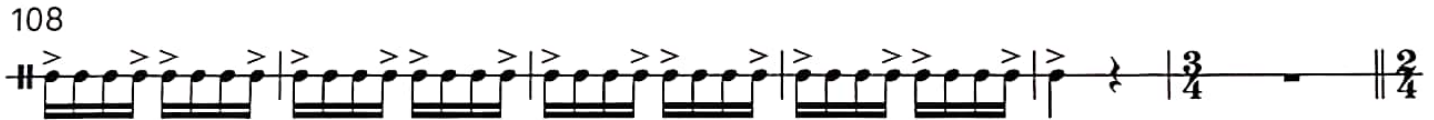
98



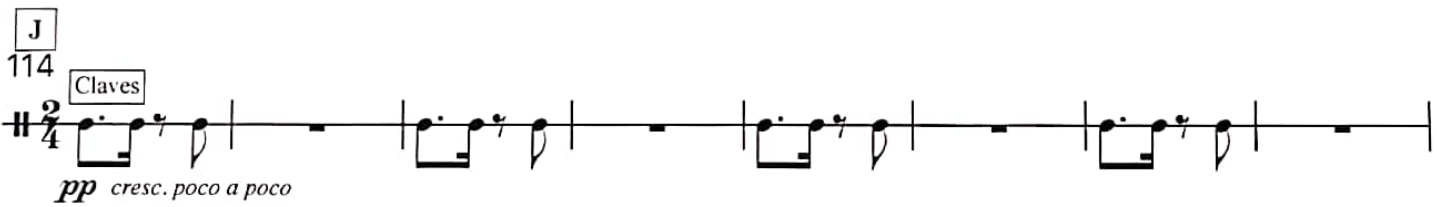
I
104



108

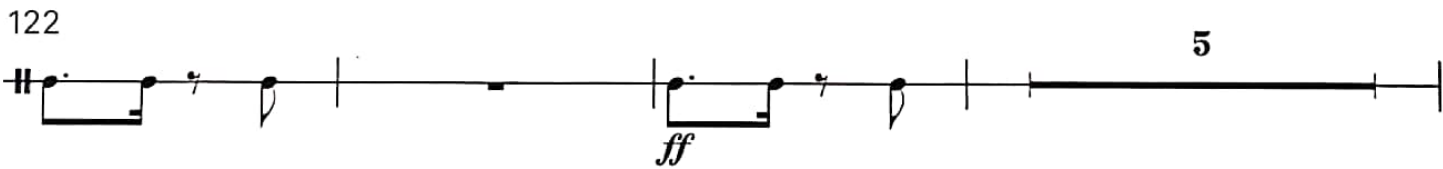


J
114 Claves



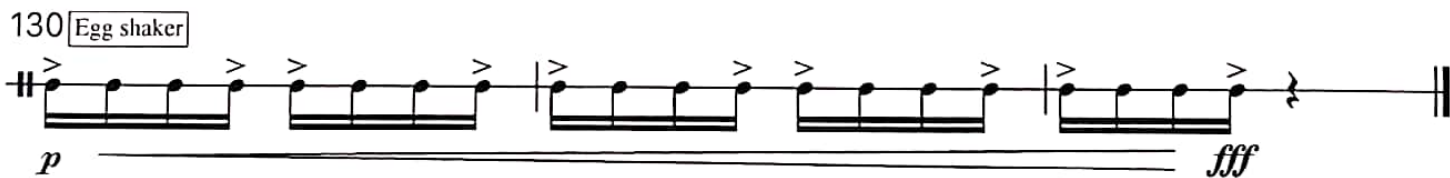
pp cresc. poco a poco

122



ff

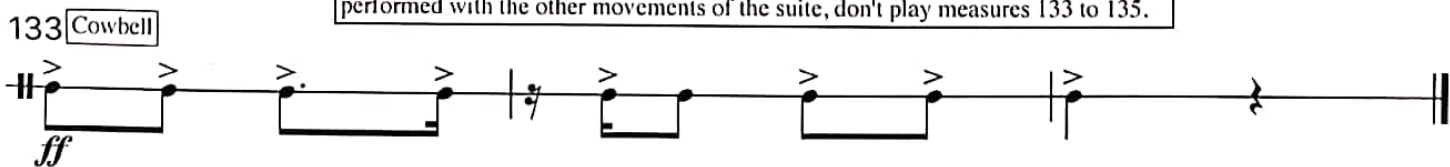
130 Egg shaker



p *fff*

If this movement is performed alone (i.e. without the other movements), replace the measures 114 to 132 by the alternative ending at measure 133. If the movement is performed with the other movements of the suite, don't play measures 133 to 135.

133 Cowbell



ff