

# Chocolats symphoniques

(Symphonic Chocolates)

Maxime Goulet  
www.maximegoulet.com  
Revised March 6th, 2020

## I - Chocolat au caramel

*Une longue mélodie lyrique supportée par une sonorité riche et enveloppante.*

(I - Caramel Chocolate: A long lyrical melody supported by a rich and enveloping sonority.)

♩ = 60

*pp* *mp* *mf* *f* *pp*

**A**  
6-7

*p*

9

*f* *pp*

**B**  
13-14

*p*

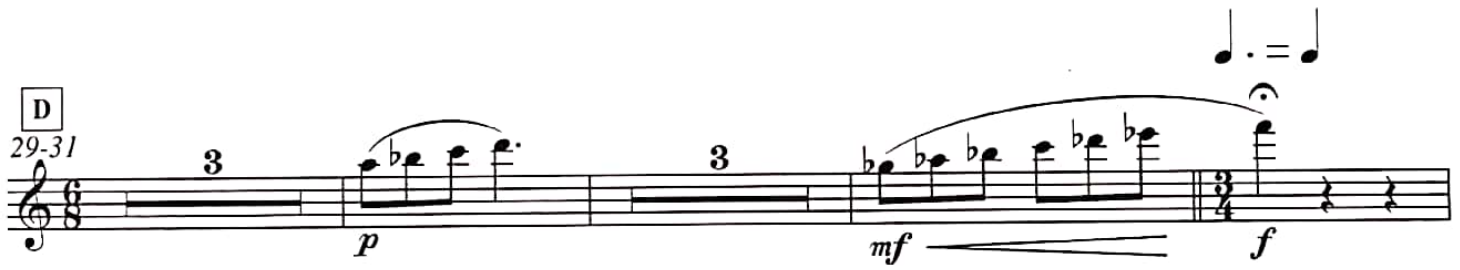
19

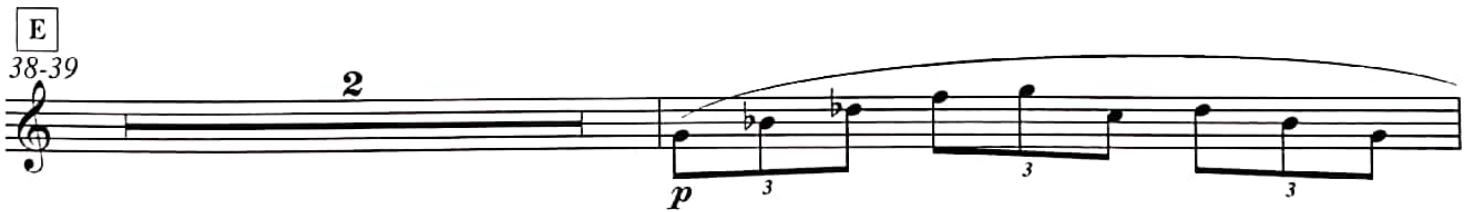
*pp* *mp* *f*

I - Chocolat au caramel (version for classical orchestra)

**C**  
23  
  
*p*

25  
  
*mp*

**D**  
29-31  
  
*p* *mf* *f*

**E**  
38-39  
  
*p* *f*

41  
  
*pp* *mp* *f*

## II - Chocolat noir

*Une intense habanera du désir et de la séduction, relevée d'une amertume dissonante.*  
(II - Dark Chocolate: An intense habanera of desire and seduction, spiced up with a dissonant bitterness.)

$\text{♩} = 90$

3

*f*

**A**

8

2

*f*

*pp*

12

2

*f*

*pp*

**B**

16

*f*

**C**

21

2

*f*

7

7

7

2 - 1

II - Chocolat noir (version for classical orchestra)

25

2

7

7

7

29

D

Flute-I solo

6

*p*

E

8

8

46

F

*f*

*f*

51

G

3

7

7

3

7

7

55

7

7

7

7

57

3

*ff*

2 - 2

3

*ff*

2 - 2



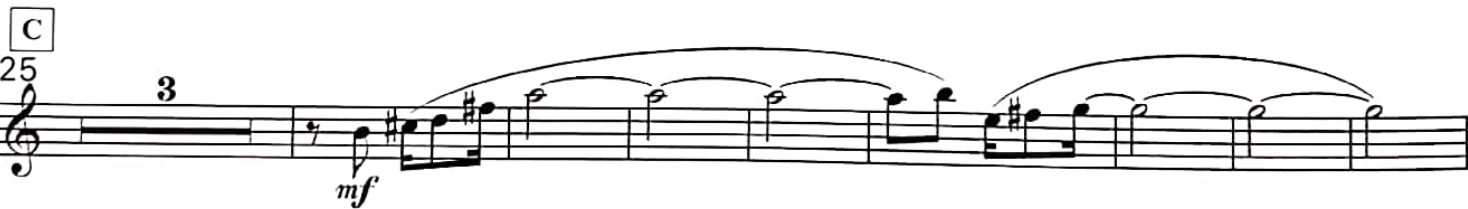
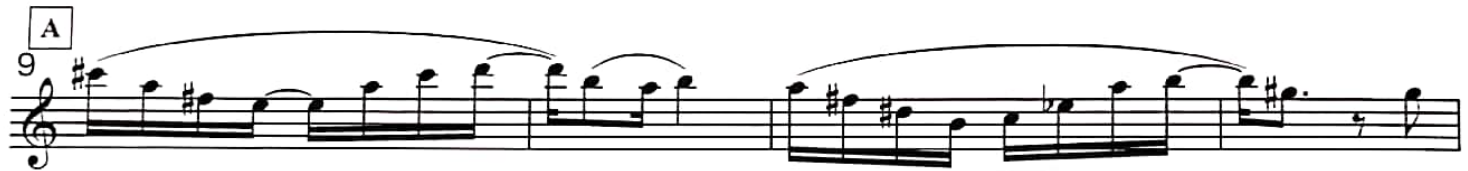
# IV - Chocolat au Café

*Un tempo d'espresso à saveur brésilienne.*

(IV - Coffee-infused Chocolate: An espresso tempo with a Brazilian flavour.)

$\text{♩} = 96$

Flute solo



IV - Chocolat au café (version for classical orchestra)

**D**  
41 Musical staff D: Treble clef, 41-48 measures. Dynamics: *pp*, *mf*.

**E**  
49 Musical staff E: Treble clef, 49-56 measures. Dynamics: *f*, *pp*, *f*, *pp*.

57 Musical staff: Treble clef, 57-63 measures. Dynamics: *f*, *mp*.

**F**  
64 Musical staff F: Treble clef, 64-67 measures.

68 Musical staff: Treble clef, 68-71 measures.

**G**  
72 Musical staff G: Treble clef, 72-76 measures.

77 Musical staff: Treble clef, 77-81 measures. Dynamics: *f*.

**H**  
82 Musical staff H: Treble clef, 82-85 measures.

86 Musical staff: Treble clef, 86-90 measures.

